

# IT SYSTEMS

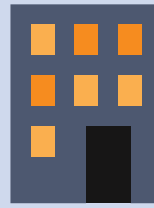
Information Technology (IT) combines all necessary technologies for information processing.

Level 4

## ENTERPRISE SCHEDULING & MANAGEMENT

Supplier Rel. Mgt., HR Mgt., Finance Mgt.,  
Supply Chain Mgt., Customer Relationship Mgt. (CRM)

Remote Office



Database Server



Level 3

## PRODUCTION MANAGEMENT

### PRODUCTION:

Resource Mgt., Process Mgt., Production Planning,  
Tracking & Tracing, Quality Mgt. (QA),  
Data Collection Perform. Analysis(KPI)

### DEVELOPMENT:

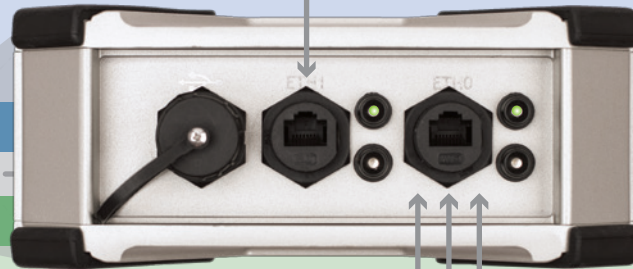
Computer Aided Design (CAD), CA Manufacturing,  
CA Process Planning, Digital Mock-up



Enterprise PC's  
Visualization &  
Reporting



**Data Commander™**



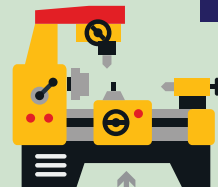
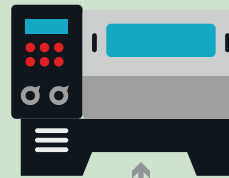
-- Integrated Firewall --

Level 2

## CONTROLS & AUTOMATION

Logic/Batch Control, Recipe Management,  
Parameter Management

PLC Machines



Level 1

## INTELLIGENT DEVICES

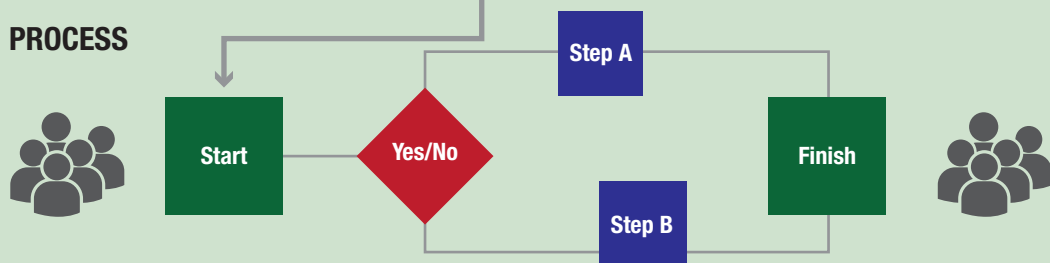
Sensors, Vision systems, RFID readers,  
Flow, Printers, Scanners

These devices can interact  
directly with the Data Commander



Level 0

## PHYSICAL PRODUCTION PROCESS



MES

Manufacturing Flow Design  
Manufacturing Flow Planning

MES

# OT SYSTEMS

Operation Technology (OT) comprises the devices, sensors and software necessary to control and monitor the plant and equipment.